



Model: HVP



WARNING

Inspection prior to use as per ABLE operating manual



Ableforge HVP steel jack is designed And developed for heavy industrial lifting Applications, as per standards DIN 7355 and EN1494:2000+A1:2008.

MECHANICAL STEEL JACK

Technical specialities

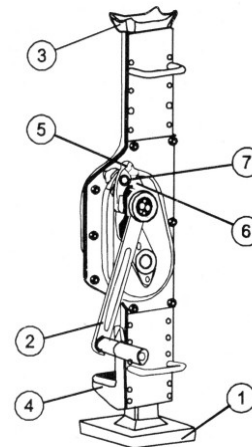
- Double pawl brake system - quick braking, safe and reliable.
- Low gearing tolerance - smooth transmissions, free of jerks.
- High efficiency and minimum turning force Less than 25 kgs is required to lift full load of all rated capacity.
- Sturdy structure, light weight and quick lift performance, high quality material CRS plate, carburized alloy steel gears.

Product Code	WLL (Ton)	Proof Load (Ton)	Height of Head at the Lowest (mm)	Height of Toe at the Lowest (mm)	Lifting Height Range (mm)	Net Weight (kg)
HVP-1.5	1.5	2.25	725	70	0 - 350	13.2
HVP-3	3.0	4.5	725	75	0 - 350	20.9
HVP-5	5.0	7.5	725	70	0 - 300	28.4
HVP-10	10	15	800	90	0 - 300	48.0
HVP-16	16	24	950	95	0 - 400	64.2
HVP-20	20	30	950	95	0 - 400	73.0

Operation Guide

- Put the steel jack on even and solid ground. Then place the loads on the Toe Support stand(4) or the Head Support Stand(3). Shake the Lever(2) clockwise to lift the loads, vice versa, the loads are lowered down.

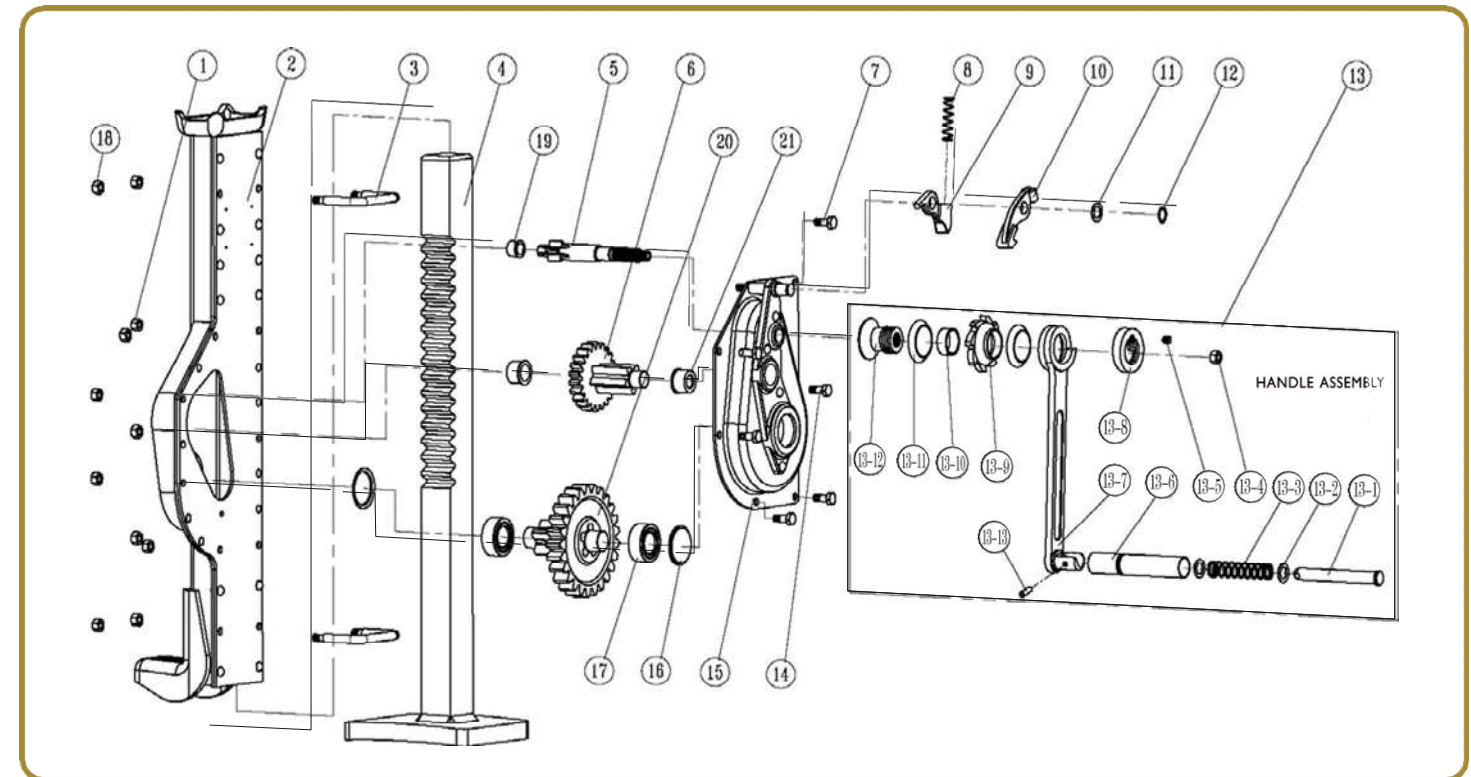
- (1) Base
- (2) Lever
- (3) Head Support Stand
- (4) Toe Support Stand
- (5) Upper Ratchet Pawl
- (6) Lower Ratchet Pawl
- (7) Axle Ring



Attention

- Do not exceed the rated capacity. Overload is forbidden.
- Before operation, please check the flexibility of the Ratchet Pawls (5), (6)
- Please be sure the jack is on complete balance when operating. Do not put it on beveled, arc or uneven surfaces. The jack must be placed on hard plain grounds.
- Before lifting, please be sure the Support Stand (4) (3) supports the goods completely.
- When several jacks are used at the same time, please make sure they are at the same lift or lowering down. The whole operation course should be directed by competent expert.
- It's forbidden putting any parts of the body under the lifted goods.
- If working force is abnormal in operation, please stop working immediately to inspect all related transmit components.
- Lubricate parts applied regularly.
- The Head Support Stand (3) should be on bottom position when the jack is not used.

DETAILS OF SPARE PARTS DRAWING



No.	NAME OF PARTS	QTY.	No.	NAME OF PARTS	QTY.
1	Hexagon locknut	6	13-5	Hexagon socket screws 8 x 8	1
2	Body assembly	1	13-6	Handle	1
3	Handle ring	2	13-7	Handle connecting rod	1
4	Rack assembly	1	13-8	Locknut	1
5	First driving shaft	1	13-9	Ratchet disk	1
6	First gear assembly	1	13-10	Brake spacer	1
7	Hexagon head bolts M8*20	4	13-11	Friction plate	2
8	Pawl spring	1	13-12	Brake	1
9	Under-pawl	1	13-13	Spring straight pin 6 x 20	1
10	Over-pawl	1	14	Fixed position bolts	2
11	Pawl washer	1	15	Shroud assembly	1
12	Circlips for shaft 14	1	16	Bearing cover	2
13	Handle assembly	1	17	Bearing assembly	2
13-1	Spring shaft	1	18	Hexagon locknut M6	4
13-2	Washer	2	19	First bearing race	1
13-3	Handle spring	1	20	Second gear assembly	1
13-4	Hexagon locknut M12	1	21	Second bearing race	2